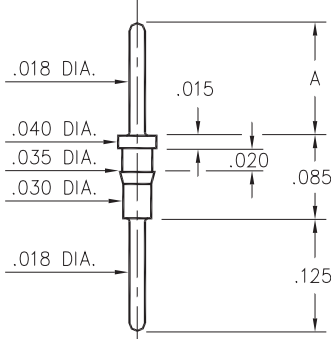


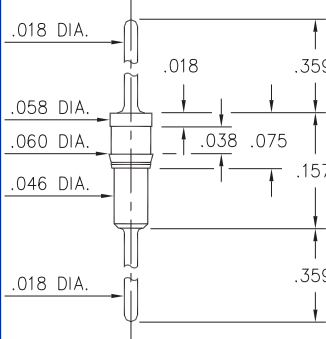
### 8685/9036



| Basic Part Number | Length A |
|-------------------|----------|
| 8685-0            | .125     |
| 9036-0            | .175     |

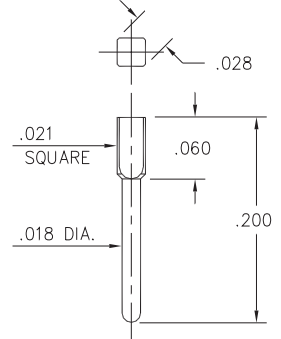
**XXXX-0-00-XX-00-00-03-0**  
 Press-fit in .033 mounting hole.  
 Pin material is Ph. Br. 544 (B2)

### 9051



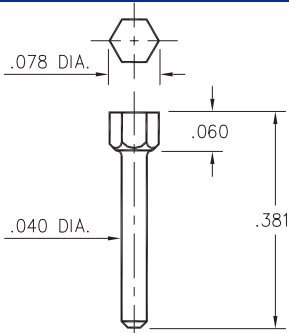
**9051-0-00-XX-00-00-03-0**  
 Press-fit in .057 mounting hole

### 8969



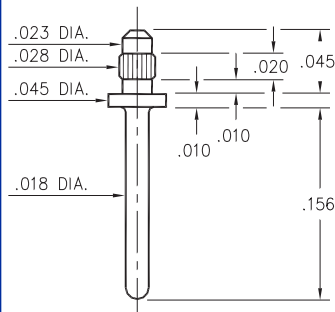
**8969-0-05-XX-00-00-03-0**  
 Square press-fit in .023 plated thru hole (use .7 mm drill prior to plating)

### 8979



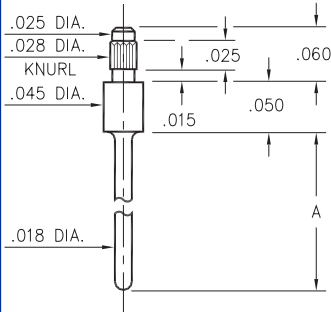
**8979-0-00-XX-00-00-03-0**  
 Hex press-fit in .074 plated thru hole

### 9159



**9159-0-00-XX-00-00-03-0**  
 Press-fit in .026 mounting hole

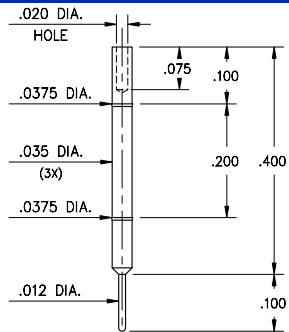
### 3155/5155



| Basic Part Number | Length A |
|-------------------|----------|
| 3155-0            | .180     |
| 5155-0            | .130     |

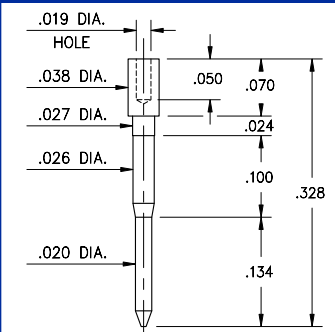
**X155-0-00-XX-00-00-03-0**  
 Press-fit in .026 mounting hole  
 Pin material is Ph. Br. 544 (B2)

### 4194



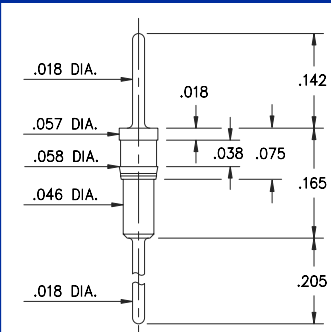
**4194-0-00-XX-00-00-08-0**  
 Wire termination and Press-fit in .036 hole

### 5556



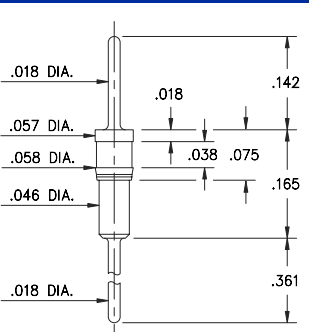
**5556-0-00-XX-00-00-38-0**  
 Wire termination

### 3790



**3790-0-00-XX-00-00-03-0**  
 Press-fit in .057 mounting hole

### 3796



**3796-0-00-XX-00-00-03-0**  
 Press-fit in .057 mounting hole

## SPECIFICATIONS

**PIN MATERIAL:**  
 Brass Alloy 360, 1/2 Hard  
 (Except where noted)

**DIMENSION IN INCHES**  
**TOLERANCES ON:**  
 LENGTHS: ±.005  
 DIAMETERS: ±.002  
 ANGLES: ± 2°

**ORDER CODE: XXXX - X - 0X - XX - 00 - 00 - 0X - 0**

**BASIC PART #**

**SPECIFY PIN FINISH:**  
**01** 200µ" TIN/LEAD OVER NICKEL  
**80** 200µ" TIN OVER NICKEL  
**15** 10µ" GOLD OVER NICKEL  
**21** 20µ" GOLD OVER NICKEL  
**34** 50µ" GOLD OVER NICKEL

